

State Profile: Louisiana

R14CC and the Louisiana Department of Education (LDOE) are collaboratively implementing projects to address high leverage problems such as school systems' fiscal transparency, literacy strategic planning, and post-secondary planning for student success. This profile provides a summary of these selected projects and an overview of state education statistics for Louisiana.

Selected Projects Conducted With LDOE

Project 1

Launching Education Progress and Investment Charts (EPIC) Dashboard* for Louisiana

Summary

Support the Louisiana Department of Education through assistance with data management and communication and collaboration with the development teams at Attuned Education Partners and Exponent Education to deliver an insightful and high-quality resource that brings transparency to Louisiana school systems

Sample Activities

- Generate an automated machine learning algorithm that classifies local education agencies' (LEAs') ESSER investments according to categories established by R14CC and LDOE
- Gather user data and translate feedback into actionable improvements to the dashboard

*The EPIC dashboard is best viewed on a desktop or laptop computer.

Project 2

Sustaining and Progressing Louisiana's Literacy Strategic Plan

Summary

The Louisiana Department of Education is implementing a Comprehensive Literacy state development program to advance the literacy skills of children from birth to grade 12 through the use of evidence-based practices, activities, and interventions

Sample Activities

- Work with LDOE on options for managing and overseeing the implementation of the statewide literacy plan, including a site visit to observe the day-to-day processes
- Create a system to evaluate, monitor, and help school-level literacy plans
- Build a sustainability plan for the literacy initiatives
- Facilitate the design of a Request for Application (RFA) for vendor support by creating multiple analysis tools that were informed by the findings from interviews and focus groups
- Recruit 12 educators to serve as reviewers to help improve LEAs' literacy plans

Project 3

Individualized Graduation Plans

Summary

Support the Louisiana Department of Education in identifying high-quality providers of graduation planning, college exploration, and career transition services for Louisiana students

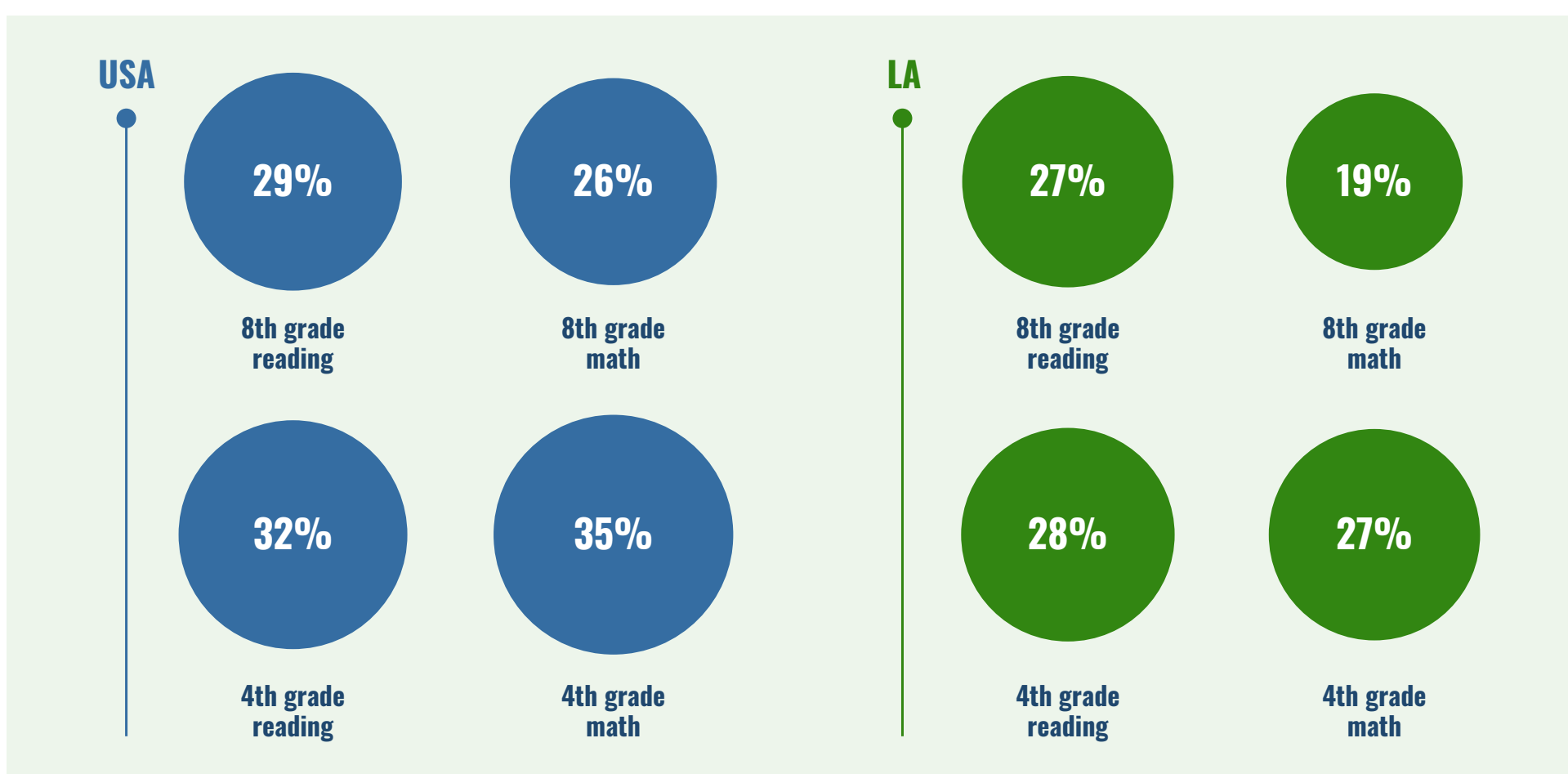
Sample Activities

- Collaborate with a web development team from Canopy Ed to design and launch a public-facing vendor guide for school systems, counselors, and families to find services that best match their needs for graduation and postsecondary transition
- Conduct interviews with vendors of electronic graduation-planning services and help synthesize key characteristics and best practices for high-quality graduation planning products
- Serve as a thought partner to LDOE in designing the intake form for vendors applying to be included in LDOE's new Individual Graduation Plan (IGP) vendor guide

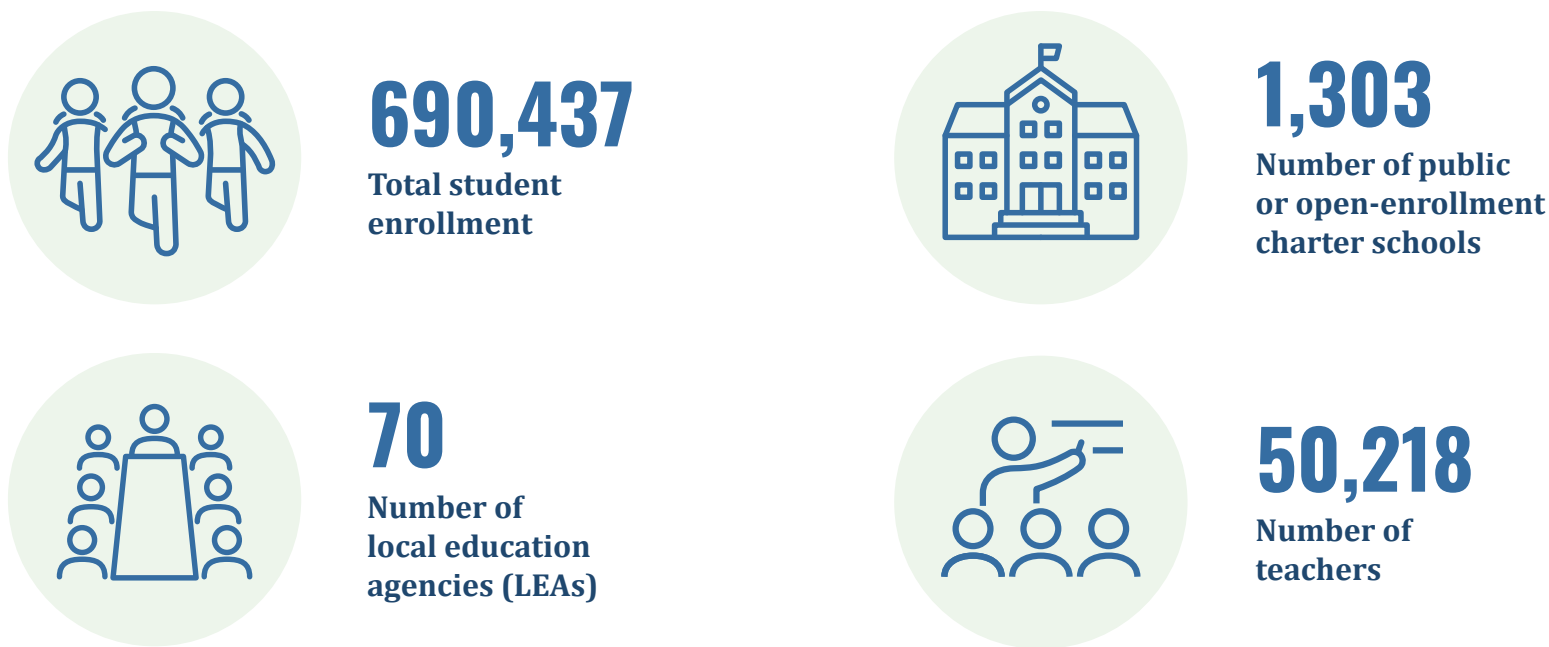
State Overview, 2021-22 School Year

Percentage of Students With NAEP Proficiency

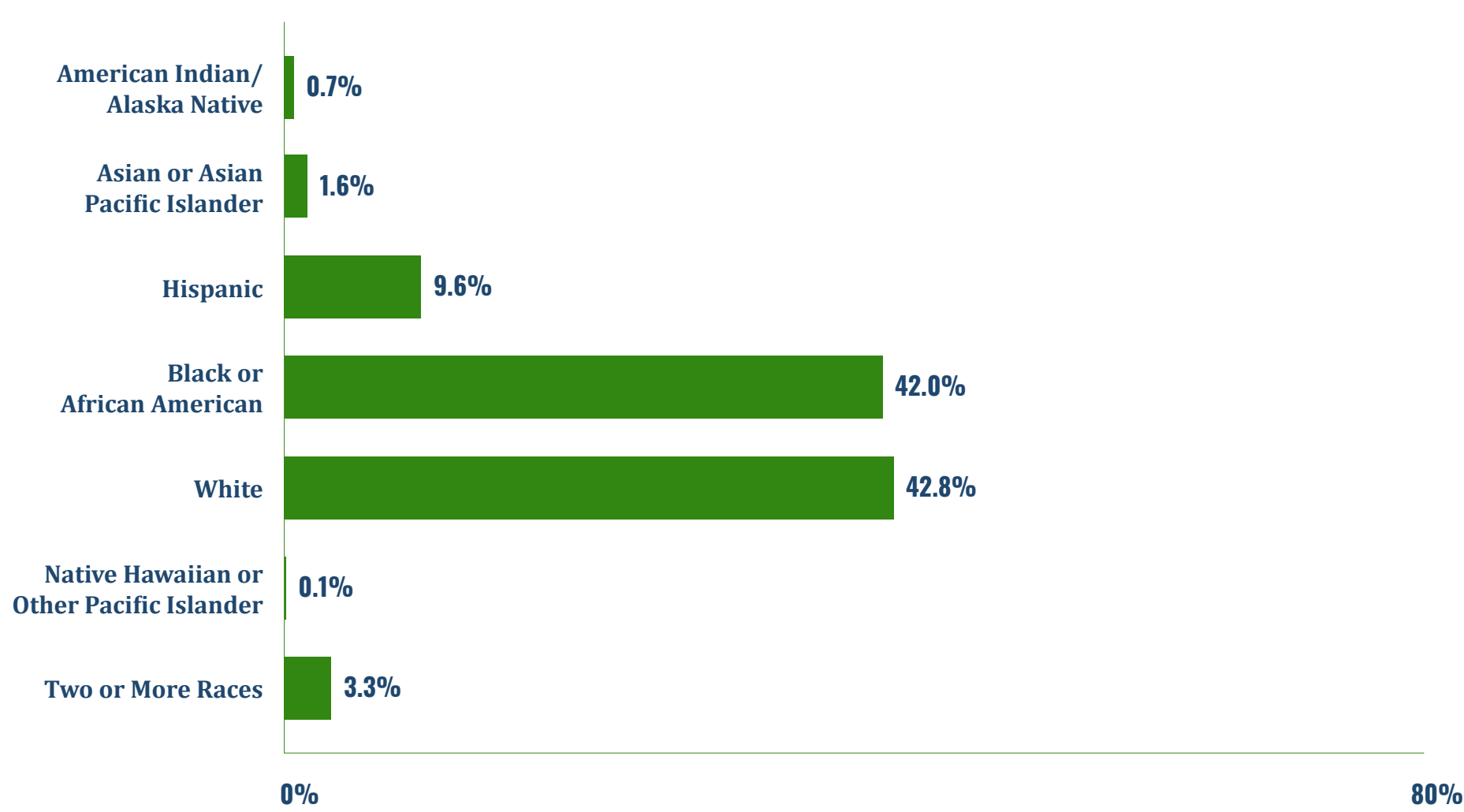
Results from the 2022 mathematics and reading assessments are based on nationally representative samples of fourth and eighth graders.



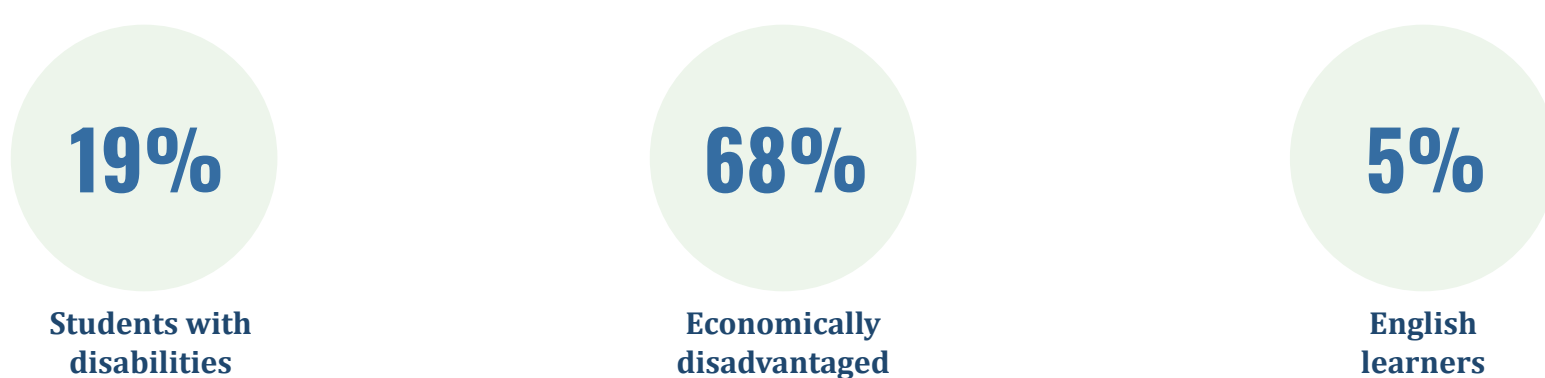
State Education at a Glance



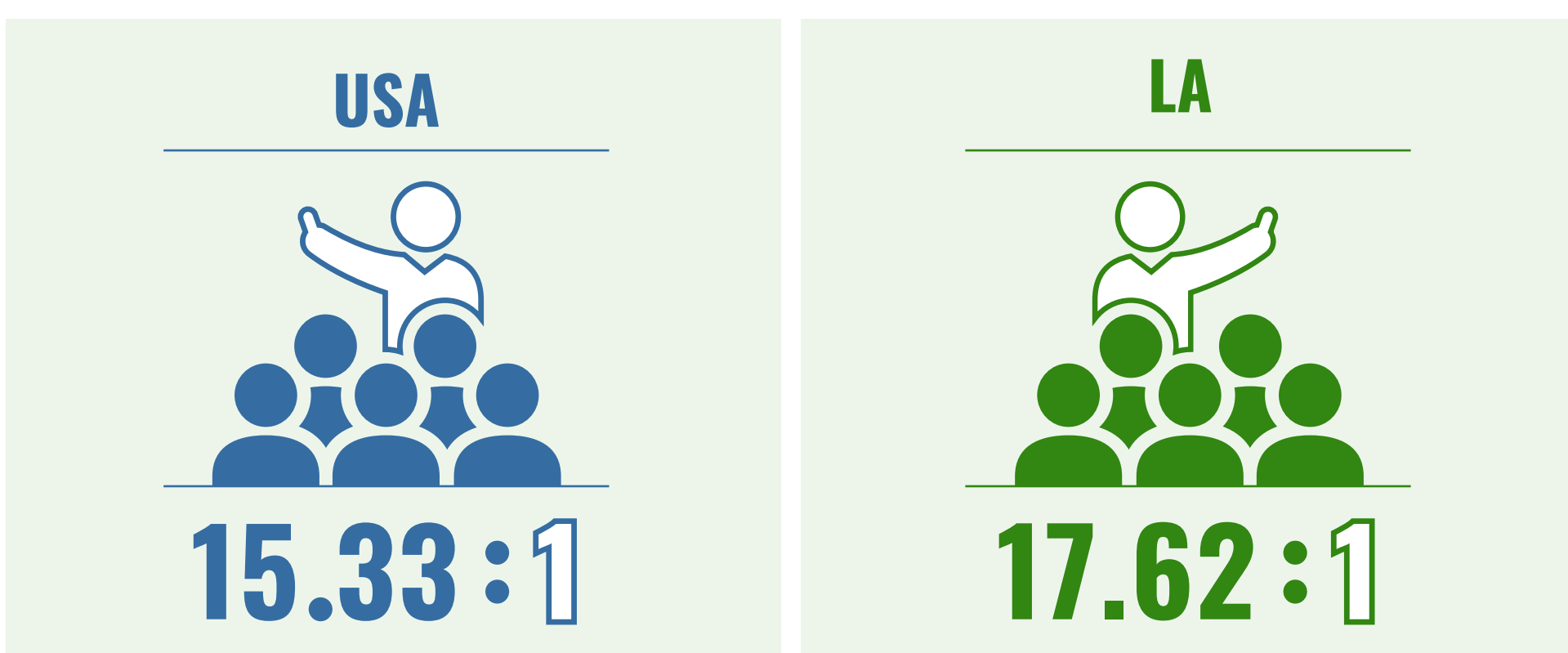
Percentage of Students by Race



Other Student Characteristics



Pupil/Teacher Ratio



The contents of this document were developed under a grant from the Department of Education. However, the contents do not necessarily represent the policy of the Department of Education, and you should not assume endorsement by the Federal government.